



GMT MONTHLY MEMBERSHIP PROGRESS REPORT

Results as of: 5/31/2020

Multiple District 6

LOCATION: COLORADO

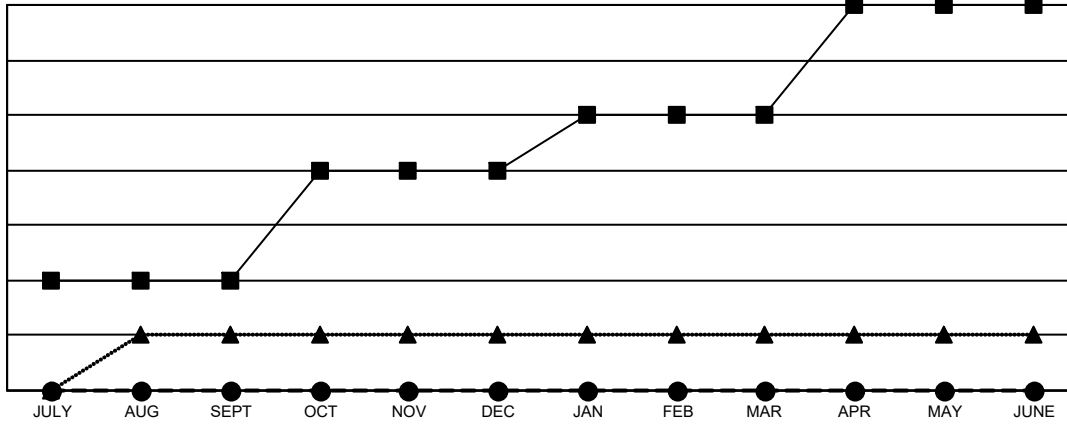
GMT: OPEN

GMT CA 1

Clubs			
RESULTS FOR 2019-2020			
QUARTER	NEW CLUB GOAL	NEW CLUBS	DROPPED CLUBS
JULY/AUG/SEPT	2	0	1
OCT/NOV/DEC	2	0	3
JAN/FEB/MAR	1	0	0
APR/MAY/JUNE	2	0	0

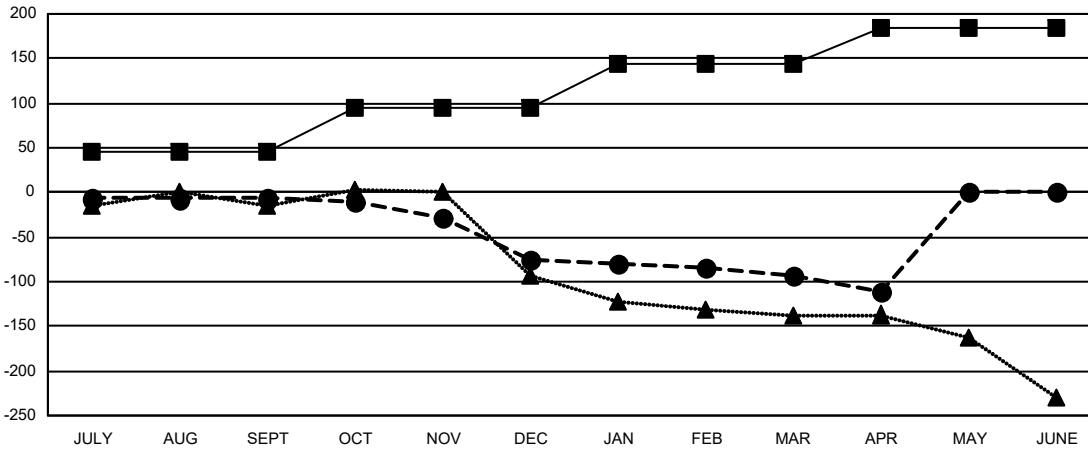
Members			
RESULTS FOR 2019-2020			
QUARTER	MEMBER GROWTH NET GOAL	MEMBER GROWTH ACTUAL	DROPPED MEMBERS ACTUAL (including transfers)
JULY/AUG/SEPT	45	94	84
OCT/NOV/DEC	50	55	119
JAN/FEB/MAR	50	72	78
APR/MAY/JUNE	40	7	24

GOALS AND ACTUAL NEW CLUBS CUMULATIVE



- - CURRENT YEAR GOALS FOR NEW CLUBS
- - CURRENT YEAR ACTUAL NEW CLUBS
- ▲ - LAST YEAR ACTUAL NEW CLUBS

GOALS AND ACTUAL MEMBERS CUMULATIVE



- - MEMBER GROWTH NET GOAL
- - MEMBER GROWTH ACTUAL
- ▲ - LAST YEAR MEMBERSHIP ACTUAL

DROPPED CLUBS: 4	
<u>DROPPED MEMBERS</u>	
DECEASED	33
CLUB CANCELLED	28
OTHER	244
TOTAL	305

59 CLUBS OF 127 ADDED 1 OR MORE NEW MEMBERS

GENDER DISTRIBUTION	
MALE	1,815 (62.56%)
FEMALE	1,086 (37.44%)

[CLICK HERE FOR CUMULATIVE MEMBERSHIP DATA](#)

TOTAL FAMILY UNIT MEMBERS	736
FAMILY MEMBERS PAYING HALF DUES	376